

PREMIUM CLASS

# SEMI-INTEGRATED 2020



c-tourer T | chic c-line T

**carthago**<sup>®</sup>  
Das Reisemobil.

# Table of contents

<b>Carthago – More than just a company</b>	<b>3</b>
<b>The premium semi-integrated motorhome</b>	<b>8</b>

## LIGHTWEIGHT PREMIUM CLASS SEMI-INTEGRATED



<b>c-tourer T</b>	<b>10</b>
The all-rounder with practically-oriented models, also in the 3.5 t weight class	
Models	22
Technology	29
Standard equipment	34

## COMFORT PREMIUM CLASS SEMI-INTEGRATED



<b>chic c-line T</b>	<b>36</b>
The fascination of the Carthago Premium Class: Elegance, comfort and extravagance	
Models	40
Technology	48
Standard equipment	52

<b>The Carthago Worlds of Living</b>	<b>54</b>
<b>The Carthago Premium DNA</b>	<b>56</b>



### You will find more information on the Carthago web site [www.carthago.com](http://www.carthago.com)

There's a lot more to say about our premium motorhomes than we can fit in the catalogue! We therefore provide a great deal of information, pictures and interactive displays on our web site. Let yourself be impressed and conveniently navigate around your dream Carthago when you are at home or on the move! Pay attention to the icons in our catalogue:



You will find more information about this topic on our web site.



You will find more information about this topic in a film on our web site.



You can experience this model interactively on our web site and navigate through the entire motorhome thanks to the 360° view.



## Carthago – More than just a company

Dear motorhome enthusiasts,

40 years of the Carthago Group - 40 years of premium concepts, variety and technical know-how. Our Carthago innovation and quality brand is celebrating a big birthday this year.

Much has grown in 40 years: Our head office with production and a large sales exhibition in Aulendorf in Upper Swabia, and our plant in Odranci/Slovenia. The number of employees has also increased to more than 1400, we have more than 200 partners in Germany and abroad, and the diversity of our vehicles has expanded with numerous different models. However, one thing hasn't changed - in spite of using state-of-the-art manufacturing methods, every Carthago has been manufactured with care and a great deal of skilled craftsmanship and attention to detail for 40 years.

We have put our heart and soul into building up the Carthago Group. We are still a family-run company in which corporate groups and financiers don't have a say. The only people we are indebted to are you, our customers. This independence was sealed with the establishment of the family foundation in

2014, and will remain so in the future. You put your trust in this in the same way as our employees do: The Carthago Group remains a dynamic family-run company with a great deal of passion, and is characterised by personal commitment.

In order to ensure that our premium claim will also continue for future decades, we implement ideas quickly, think innovatively and abide by our Carthago Premium DNA. See for yourself: visit us at exhibitions, at our dealers or in Carthago City.

**Karl-Heinz Schuler,**

Founder, owner and foundation chairman

# The Carthago Premium DNA

*We find that  
only the best is  
good enough*



Carthago has been an independent family-run company and permanent feature at the pinnacle of the motorhome industry for 40 years. Karl-Heinz Schuler, the founder and owner, talks about what constitutes the Carthago premium DNA, why every Carthago motorhome is something very special and what unites the two at the same time.

## ***Mr. Schuler, when did you decide to build motorhomes?***

**KARL-HEINZ SCHULER** Whilst I was studying for my degree, I couldn't help noticing the increasing number of camper vans. I examined them more closely at the time, and something became clear to me in an instant: We can do better than that! The foundations for Carthago were laid with this idea and motivation.

## ***Carthago has evolved into a premium manufacturer since 1979.***

### ***Did you anticipate this success story at the time?***

**KARL-HEINZ SCHULER** No-one could have known at the time that we would be so successful, nor could it have been planned. Our goal was always to build the best high-end motorhomes. We want to have satisfied customers, and success and growth will then follow naturally.

### ***What is your recipe for success?***

**KARL-HEINZ SCHULER** The secret of our success is the Carthago inventiveness. We are the leading innovator in the motorhome industry, we maintain our quality claim with every model series, and we are a pioneer within the industry time and time again. All of this is anchored in our Carthago premium DNA.

### ***What does Carthago Premium DNA stand for?***

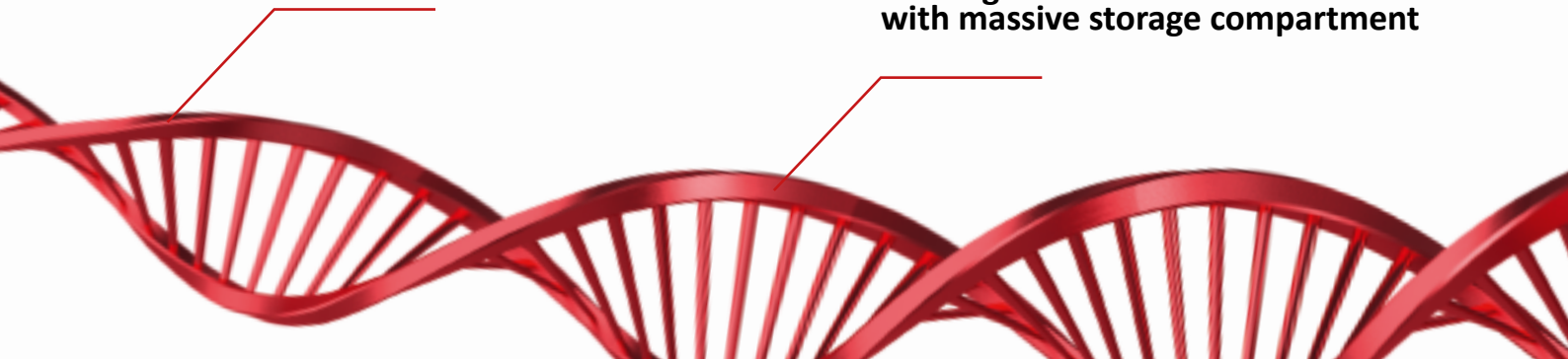
**KARL-HEINZ SCHULER** Our Carthago premium DNA is our promise of value to our customers, it can be found in every one of our motorhomes and it is motivation and an obligation at the same time. It is characterised by the Carthago bodywork, the biggest storage space system in its class, the well thought-out heating and air conditioning technology, the highest payload reserves, our driving safety and visibility concept and the Carthago personality. We are simply exceptional: Our materials, our connection technology and the weight and stability demands are even similar to those of aircraft technology. Quite rightly, every sixth integrated motorhome that is registered in Europe in the price class above 85,000 Euros is a Carthago. Because a Carthago is simply unmistakeable!

Long-lasting. High stability.

**Carthago Liner  
premium-class  
body construction**

Space guaranteed.

**Carthago double floor basement  
with massive storage compartment**







***How do Carthago drivers benefit from the premium DNA?***

**KARL-HEINZ SCHULER** Our core expertise is in motorhomes in the Liner premium class. This is because our 40 years of experience in this area flow into every stage of development and manufacturing. We think that only the best is good enough for the comfort and safety of our customers! Not only do we provide maximum durability and value retention, safety, protection and comfort, it is just as important to us to implement every idea and every innovation in practice and make everyday travelling as enjoyable as possible. And this applies to all of our vehicles – regardless of whether it is a 3.5 ton lightweight or a Liner class vehicle. In this way, every Carthago motorhome becomes something special. Each Carthago is therefore a synonym for exclusivity and quality. Or, to put it briefly, it stands for “The motorhome”.

***Carthago city in Aulendorf is the company headquarters. What makes it special?***

**KARL-HEINZ SCHULER** The fact that any potential customer has the opportunity to experience the Carthago premium DNA for themselves! All potential and existing customers are welcome in Carthago City. A tour of the factory will give you an insight into handicraft perfection combined with high-tech components and state-of-the-art manufacturing methods. You can inspect the latest models at your leisure in our large showroom, arrange test drives and also rent motorhomes. It's worth making the trip to Aulendorf in Upper Swabia!

Unique. Unmistakable.  
Extravagant.

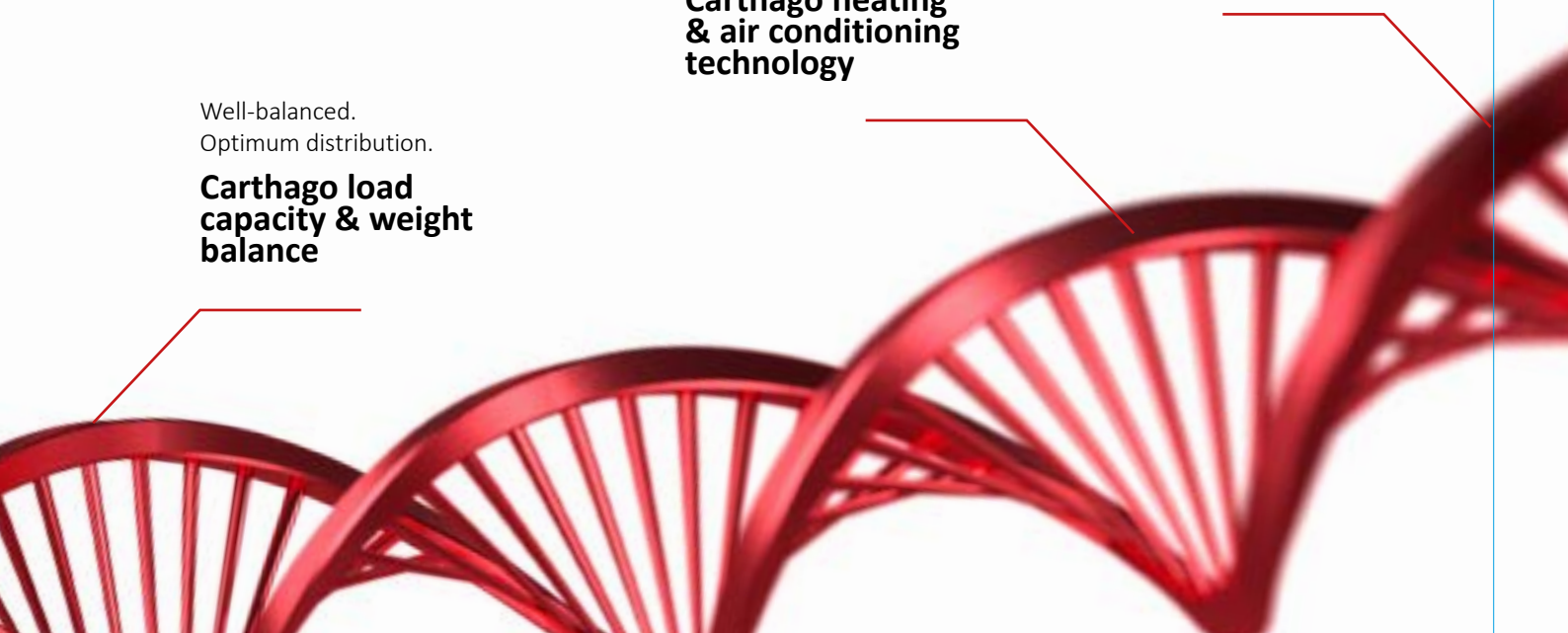
**Carthago Personality**

Well-being – all year round.

**Carthago heating  
& air conditioning  
technology**

Well-balanced.  
Optimum distribution.

**Carthago load  
capacity & weight  
balance**





▲ Carthago company headquarters in Aulendorf, Upper Swabia

# Carthago City

## Welcome

Down-to-earth and open minded at the same time, that is Carthago culture. We have remained true to our roots with the **company headquarters in Carthago City** in Aulendorf/Upper Swabia, between Ulm and Lake Constance.

As well as the manufacturing facility for our premium class motorhomes, a **large sales exhibition**, the service centre for end customers and service partners as well as the company headquarters are concentrated here.

You can see the combination of perfect craftsmanship with high-tech components and state-of-the-art manufacturing methods for yourself on a factory tour. Of course, you are also welcome to spend the night on one of the **company pitches**.

The Carthago premium motorhome deserves premium service. About **200 dealers and service centres** throughout Europe look after you and your Carthago motorhome. Wherever you live, wherever you roam: Carthago is never far away! Your initial contact is your local dealer, and when you are travelling a close-knit network of dealers and service partners is at your side throughout Europe.

All of our dealers and service centres are trained as **certified Carthago Partners** in a multi-level academy programme. However, exceptional situations don't stop at closing time. Carthago has therefore set up an emergency number on which travellers can obtain technical assistance if they have serious problems, even on Saturdays, Sundays and public holidays.





▲ Large sales exhibition in Carthago City



▲ Take a look behind the scenes with a factory tour. Register at [www.carthago.com](http://www.carthago.com)





▲ **Single level living area floor** from rear to driver's cab



▲ **All-round overhead storage cabinets** above driver's cab with ample storage space and indirect lighting

## The fascination of the premium semi-integrated

Dynamic and comfortable – simply Carthago

They are the coupés among motorhomes – flat, stylish and dynamic. The slender driver's cab gives you a feeling of security and gives the motorhome great handling. The flat profile of the roof connection optimises the aerodynamics and gives semi-integrated motorhomes a bit of sportiness for the way.

An attractive side-effect: because of the original driver's cab of your basic vehicle, the semi-integrated motorhomes are always somewhat more cost-effective than the elaborate integrated motorhomes. The T-models therefore represent the entry level to the world of Carthago motorhomes.





▲ **Optional central drop-down bed:** electrically operated, large sleeping area, standing height beneath bed in living mode 184 cm



▲ **Driver's cab integration** in living area, large L-shaped lounge seating group with side seat bench (picture with central drop-down bed option)



▲ **Relaxed TV viewing position:** the driver's cab seats can be rotated by 180°



▲ **Comfortable sitting position** at living area table, all seats integrated

# c-tourer

## The All-Rounder

with practically-orientated models, also in the 3.5 t weight class

A unique entry to the Carthago premium class: the c-tourer T brings all of the advantages of a Carthago at an amazingly attractive price-performance ratio. It is a lightweight among its contemporaries at the same time.



3.5 t



### Weight class

- + Large selection: compact models for the 3.5 t weight class and comfort-oriented models with a gross weight of up to 4.25 t
- + Carthago lightweight construction technology – outstanding payload, also in the 3.5 t weight class

4.25t



FIAT

AL-KO

### Chassis

- + Fiat Ducato with AL-KO low frame 35 light/40 heavy, wide wheelbase rear axle, 198 cm
- + Safety packages as standard: Airbag, ESP, ABS, hill holder, traction control
- + Optional: Fiat driver's assistance package



### Living comfort

- + "Smartline plus" furniture design, choice of two worlds of style
- + Single level living area floor
- + L-shaped lounge seating group with side seat bench
- + Kitchen with six large drawers, professional gourmet cooker and round sink
- + Washroom solutions: maximum comfort and separate changing room
- + Rear beds with the biggest sleeping dimensions in the class





### Storage space

- + Double floor basement with huge, heated storage space, usable height up to 55.5 cm
- + Exterior access via several large hatches, convenient access from the inside via the seat bench cover of the L-shaped lounge seating group and the swing-up side seat bench
- + Large, central through-loading space (interior height 22 cm) with extra-low basement storage compartment (usable height 46 cm) with large living area floor hatch
- + Scooter garage: Interior height up to 120 cm\*, load capacity up to 350 kg



### Self-sufficiency/technology

- + 150 l fresh water, 140 l waste water
- + 1 x 80 Ah gel batteries (can be increased to 2 x 80 AH)



### Air conditioning/heating

- + Truma Combi 6 warm air storage heating system
- + Double floor basement with underfloor heating effect

\* depending on model

c-tourer



**c-tourer T 143 LE** in epic bicolor world of style and Barcelona world of living





## Living area features

- + Two worlds of style to choose from: standard epic bicolor, optional Casablanca
- + Luxury living room table with chrome piping, can be moved in 2 directions and rotated by 360° using a foot pedal

- + Indirect ambient lighting and many spotlights with LED lighting technology
- + Level passage from living room to driver's cab without tripping hazards



▲ Model T 143 LE

### L-shaped lounge seating group with side seat bench

- + 22" TV pull-out system in TV cabinet above seating group
- + Shoe cabinet with storage system in the base of the seat bench



▲ TFT pull-out system above the seating group



▲ Models T 142 DB, T 148 LE, T 149 LE, T 150 Q8

### Large L-shaped seating group with long side seat bench, optional 5th belted seat

- + 24" TV pull-out system behind side seat bench backrest
- + Shoe cabinet with storage system in the base of the seat bench



▲ TV pull-out system behind side seat bench backrest



▲ Models T 144 LE, T 144 Q8

### L-shaped lounge seating group with side seat bench

- + 24" TV wall bracket in entrance area combination cabinet
- + Shoe compartment in entrance area



▲ Flat screen with wall bracket in entrance area



▲ Models T 145 DB H, T 148 LE H

### Large L-shaped seating group with long side sofa, optional 5th belted seat

- + 24" TV pull-out system behind side seat bench backrest
- + Shoe cabinet with storage system in the base of the seat bench

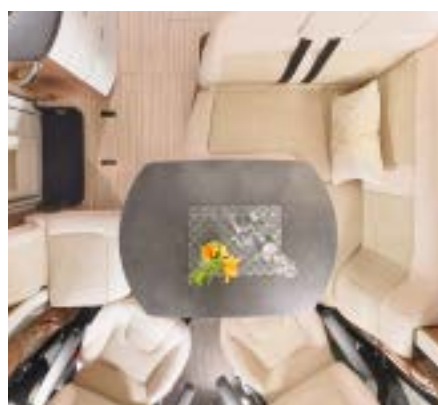


▲ TV pull-out system behind side seat bench backrest





▲ c-tourer T 143 LE in epic bicolor world of style, Barcelona world of living



▲ L-shaped lounge seating group with side seat bench (T 143 LE)



▲ Practical shoe cabinet beneath lounge seating group in entrance area with shoe storage system



▲ c-tourer T 149 LE in Casablanca world of style and Malaga world of living

## Kitchen features

- + “Professional gourmet” 3-ring hob with divided glass cover, robust cast iron grate and easy-clean glass surface
- + Kitchen area with six large drawers and integrated waste bin
- + Designer overhead storage compartment in vertical waveform
- + Sink cover embedded flush in the surface, can be used as additional work surface/chopping board
- + Optional: Pull-out system for capsule coffee maker in overhead storage cabinet



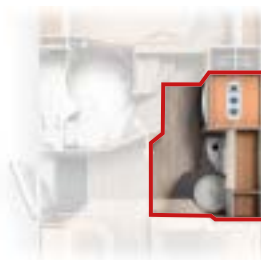
▲ Model T 143 LE

### Space-saving galley kitchen

- + Short vehicle length
- + 145-l Slimtower fridge incl. 15 l freezer compartment at hand height



▲ Drawer for coffee capsule machine in overhead storage compartment above kitchen



▲ Models T 142 DB, T 145 DB H, T 148 LE, T 148 LE H

### Corner kitchen

- + Large work surface
- + 160-l fridge incl. 30-l freezer compartment at hand height
- + Spice rack on kitchen wall (T 142 DB, T 148 LE)



▲ Practical spice rack



▲ Models T 144 LE, T 144 QB

### Corner kitchen

- + Large work surface
- + 145-l Slimtower fridge opposite incl. 15 l freezer compartment at hand height



▲ Large 145-l Slimtower fridge at hand height



▲ Models T 149 LE, T 150 QB

### Luxury corner kitchen

- + Curved, extra large work surface, extended into round washroom wall
- + 160-l fridge opposite incl. 30-l freezer compartment at hand height



▲ Securely stored: practical bottle holders





▲ Comfortable corner kitchen in Casablanca world of style (T 149 LE, T 150 QB)



▲ Space-saving galley kitchen in epic bicolor world of style (T 143 LE)



▲ Corner kitchen with spice rack in epic bicolor world of style (T 142 DB, T 148 LE)



▲ Massive storage compartment in the six large drawers



▲ Use of the sink cover via the wall holder with cutting board function

## Washroom and changing room highlights

- + Solid washroom door with interior hinges, metal handle and door lock
- + Shower room can be completely separated from the washroom whilst showering
- + Spacious wash stand base unit
- + Numerous shelves
- + Mini-Heki skylight in washroom



### Combined washroom

- + Large, round shower that can be separated via a sliding door
- + Large mirror storage cabinet with shelves

▲ Models T 143 LE, T 145 DB H, T 148 LE H



▲ Separate round shower



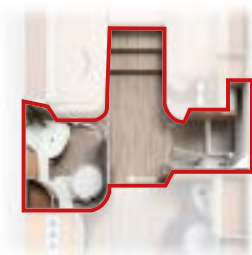
### Combination washroom with changing area

- + Separate round shower
- + Large mirror storage cabinet with shelves
- + Separation from living area as changing room via the room dividing function of the washroom door
- + T 148 LE: additional solid wooden sliding door for partitioning of sleeping area
- + Changing room with room-high wardrobe

▲ Models T 142 DB, T 148 LE



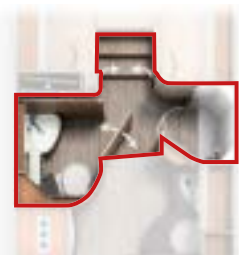
▲ Changing room with room divider



### Compact and Luxury washroom with changing room

- + Spacious washroom / toilet with shower opposite
- + Waterproof shower insert in same design as living area floor, removable for cleaning purposes (T 149 LE)
- + Separation from living area as changing room via the room dividing function of the washroom door or sliding door
- + T 149 LE: comfort luxury washroom with additional separation of sleeping area by sliding door
- + T 150 QB: comfort luxury washroom with additional separation of sleeping area by pull-out room partitioning and TV wall

▲ Models T 144 LE, T 144 QB



▲ Models T 149 LE, T 150 QB





▲ **Combination washroom with washing, toilet and shower room**  
(T 142 DB, T 148 LE)



▲ **Washroom with washbasin and toilet** (T 144 LE, T 144 QB)



▲ **Luxury washroom with changing room** (T 149 LE, T 150 QB)

## Bedroom features

- + Largest sleeping areas in the class
- + Two-part heated and ventilated slatted frame with flexibly supported wooden slats
- + Quality 7-zone cold foam mattress with breathable climate quilting

- + Wardrobes with considerable interior height due to recessing into the double floor
- + Optional: World of Sleeping and decoration set with made-to-measure elasticated covers



### Rear transverse bed

- + Large sleeping area
- + Bed access via large entry steps
- + Large wardrobe beneath bed
- + Room-high wardrobe

▲ Models T 142 DB, T 145 DB H



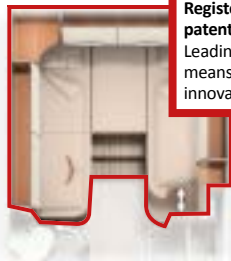
▲ Wardrobe beneath transverse rear bed



### Lengthways single beds

- + Large sleeping areas with self-supporting head sections (passenger side only in T 144 LE)
- + Sleeping area can be moved by 30 cm for a sleeping length of 200 cm, large luxury washroom and short vehicle length (T 144 LE)
- + Sleeping area extension between the beds with additional mattress, access via pull-out access steps (without ladder, not model T 144 LE)
- + Wardrobes beneath the lengthways single beds, conveniently accessible from front and above via the lift function

▲ Models T 143 LE, T 148 LE, T 148 LE H, T 149 LE



Registered for patent approval!  
Leading by means of innovation

▲ Model T 144 LE with a bed on the driver's side which can be extended by up to 30 cm



### Queen-size bed

- + Sleeping area can be moved by 30 cm for comfortable living and sleeping conditions with a short vehicle length. Living condition: easy access to wardrobes. Sleeping position: Sleeping length 195 cm (T 144 QB)
- + Adjustable head section
- + Wardrobes on each side of the queen-size bed
- + Large pull-out at front of queen-size bed
- + Model T 150 QB with drop-down mattress at passenger side for extra-wide access

▲ Model T 144 QB



▲ Model T 150 QB



▲ Optional: TV cabinet for lengthways single bed models (except T 144 LE)



▲ Large rear transverse bed with all-round overhead storage cabinets

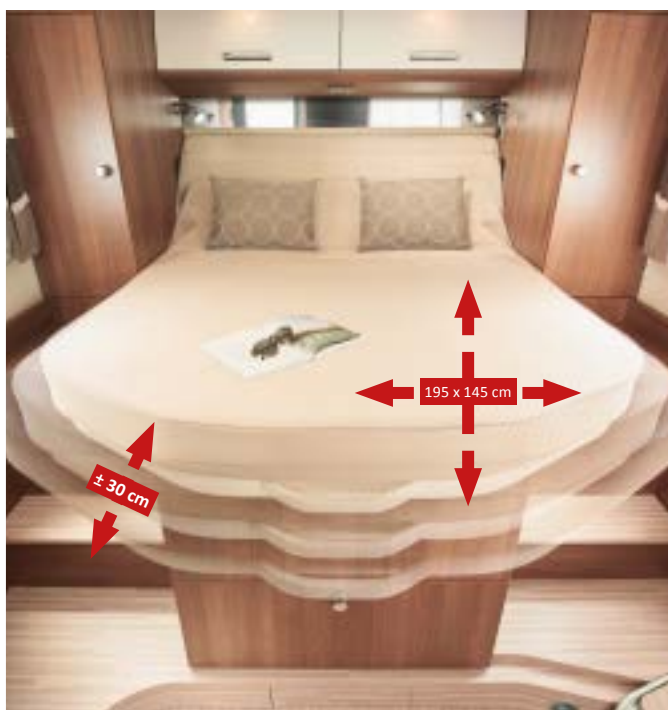




▲ Wardrobes beneath the lengthways single beds, conveniently accessible from front and above via the lift function



▲ Large lengthways single beds with self-supporting head section, pull-out access steps (T 143 LE, T 148 LE, T 148 LE H, T 149 LE)



▲ Sleeping area can be extended by 30 cm for comfortable living and sleeping conditions within a short vehicle length (T 144 QB)



▲ Registered for patent approval: single bed at driver's side can be extended by 30 cm (T 144 LE)

## c-tourer T 142 DB

Number of seats with 3-point safety belt: 4/5\* Number of sleeping berths: 2/4\*



## c-tourer T 143 LE

Number of seats with 3-point safety belt: 4 Number of sleeping berths: 2/3\*



## c-tourer T 144 LE

Number of seats with 3-point safety belt: 4 Number of sleeping berths: 2/4\*



**Unique floor plan!**  
Carthago patent pending:  
Leading by means of  
innovation



\*with options



## MODEL HIGHLIGHTS

- + Short vehicle length, specifically for the 3.5 t weight class: L-shaped lounge seating group with side seat bench, large transverse rear bed
- + Corner kitchen with large work surface
- + Combined washroom with round shower
- + Room-high wardrobe
- + Additional wardrobe underneath the rear bed



**Chassis:** Fiat Ducato AL-KO low frame 35 light  
**Ready-to-drive weight from:** 2,915 kg  
**Additional loads up to:** 1,295 kg



- + All-rounder: lots of comfort, short vehicle length, lighter weight
- + L-shaped lounge seating group with side seat bench
- + Compact galley kitchen
- + Combined washroom with round shower
- + Wardrobes beneath lengthways single beds with extra-large interior height due to lowering into the double floor
- + Pull-out access steps for the lengthways single beds
- + Optional: TV cabinet in bedroom with special TV pull-out system



**Chassis:** Fiat Ducato AL-KO low frame 35 light  
**Ready-to-drive weight from:** 2,925 kg  
**Additional loads up to:** 1,285 kg



- + Unique: L-shaped lounge seating group, side seat bench, corner kitchen, luxury washroom and 200 cm long single beds with a vehicle length of about 7 m
- + Corner kitchen with large work surface
- + Living room partitioning by means of sliding door
- + Compact luxury washroom with separate shower
- + Lengthways single bed at passengers side, movable by 30 cm: 200 cm sleeping length in sleeping mode / spacious shower room in living mode
- + Wardrobes beneath lengthways single beds with extra-large interior height due to lowering into the double floor



**Chassis:** Fiat Ducato AL-KO low frame 35 light  
**Ready-to-drive weight from:** 2,965 kg  
**Additional loads up to:** 1,245 kg



\*with options

## c-tourer T 144 QB

Number of seats with 3-point safety belt: 4

Number of sleeping berths: 2/4\*

Optional patented Pedelec scooter garage with interior height adjustment\*: leading by means of innovation



## c-tourer T 145 DB H

Number of seats with 3-point safety belt: 4/5\*

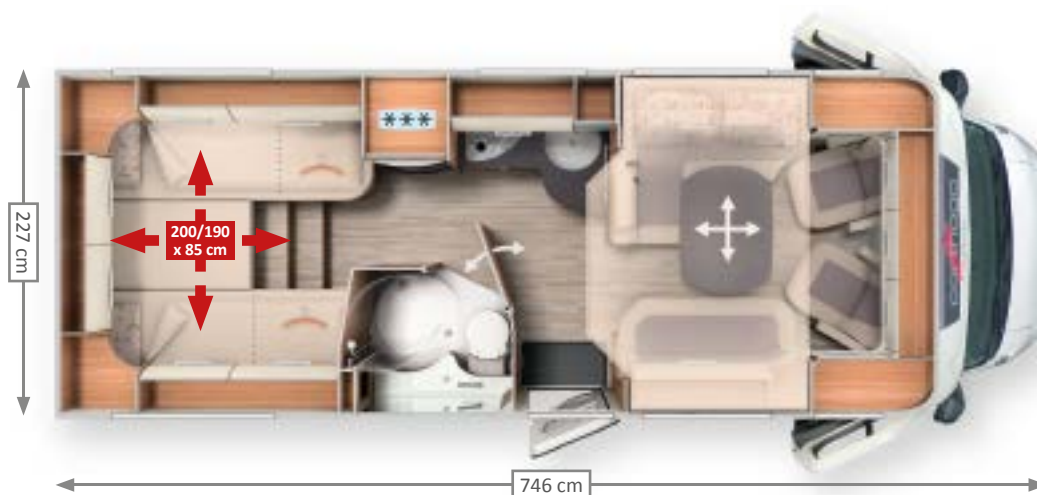
Number of sleeping berths: 2/5\*



## c-tourer T 148 LE H

Number of seats with 3-point safety belt: 4/5\*

Number of sleeping berths: 2/5\*



\*with options



## MODEL HIGHLIGHTS

- + Unique: L-shaped lounge seating group, side seat bench, corner kitchen, luxury washroom and 195 cm queen-size bed with a vehicle length of just under 7 m
- + Corner kitchen with large work surface
- + Living room partitioning by means of sliding door
- + Compact luxury washroom with separate shower
- + Queen-size bed can be moved by 30 cm: 195 cm sleeping length in sleeping mode / spacious access to the wardrobes in living mode
- + Two wardrobes at side of queen-size bed
- + Large pull out drawers at front of queen-size bed



**Chassis:** Fiat Ducato AL-KO low frame 35 light  
**Ready-to-drive weight from:** 2,965 kg  
**Additional loads up to:** 1,245 kg



- + Short vehicle length specifically for the 3.5 t weight class with L-shaped lounge seating group and long side sofa (optional 5th belted seat), large transverse rear bed
- + Optional: central drop down bed with wide sleeping area for two persons
- + Corner kitchen with large work surface
- + Combined washroom with separable round shower
- + Room-high wardrobe
- + Additional wardrobe underneath the rear bed



**Chassis:** Fiat Ducato AL-KO low frame 35 light  
**Ready-to-drive weight from:** 2,925 kg  
**Additional loads up to:** 1,285 kg



- + Comfort-oriented: large L-shaped seating group with long side sofa, (optional 5th belted seat), large lengthways single beds
- + Optional: Central drop down bed with wide sleeping area for two persons
- + Corner kitchen with large work surface
- + Combined washroom with separable round shower
- + Wardrobe with extra large interior height beneath the lengthways single beds
- + Optional: TV cabinet in bedroom with special TV pull-out system

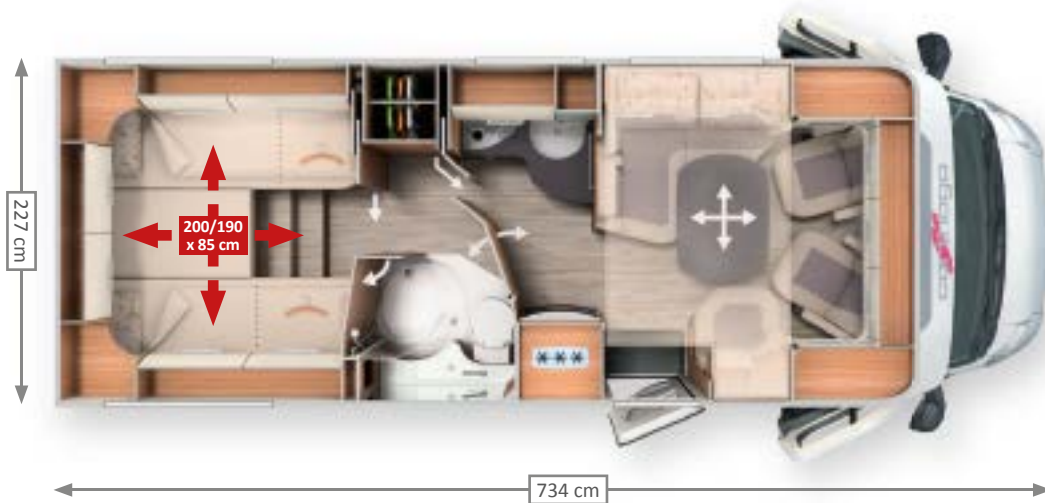


**Chassis:** Fiat Ducato AL-KO low frame 35 light  
**Ready-to-drive weight from:** 2,985 kg  
**Additional loads up to:** 1,225 kg



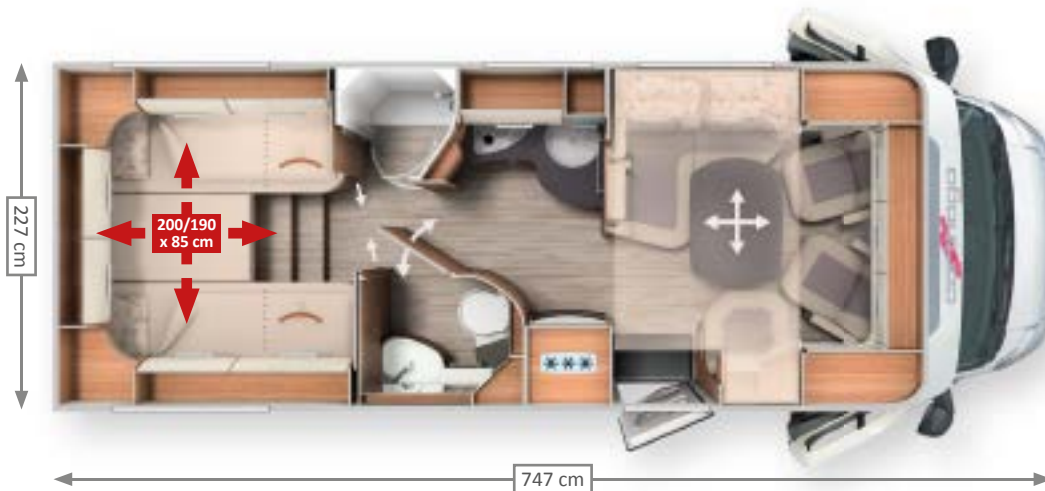
## c-tourer T 148 LE

Number of seats with 3-point safety belt: 4/5\* Number of sleeping berths: 2/4\*



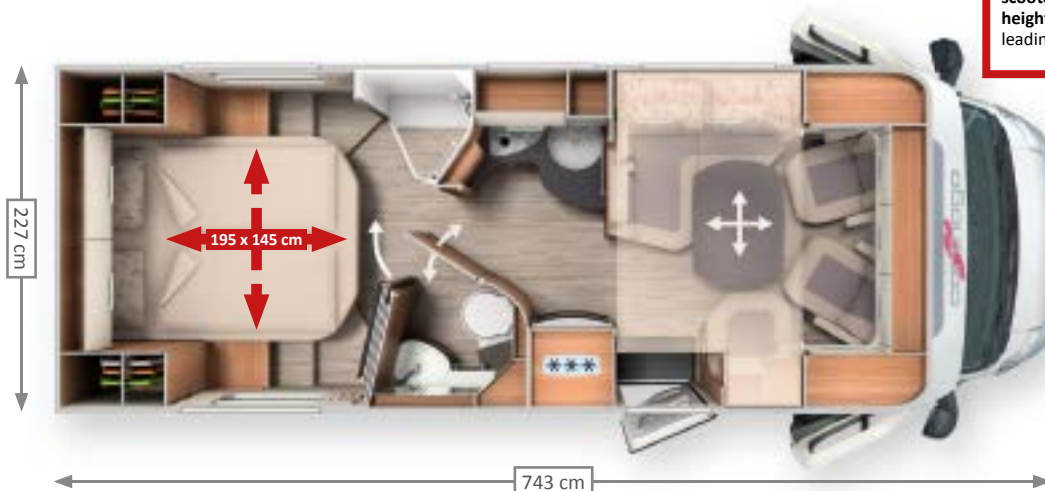
## c-tourer T 149 LE

Number of seats with 3-point safety belt: 4/5\* Number of sleeping berths: 2/4\*



## c-tourer T 150 QB

Number of seats with 3-point safety belt: 4/5\* Number of sleeping berths: 2/4\*



Optional patented Pedelec scooter garage with interior height adjustment\*: leading by means of innovation



\*with options



## MODEL HIGHLIGHTS

- + Comfort-oriented floor plan: large L-shaped lounge seating group, long side seat bench (optional 5th belted seat), corner kitchen, room-high wardrobe
- + Corner kitchen with large work surface
- + Combined washroom with round shower, washroom door with room dividing function
- + Changing room with sliding door to sleeping area
- + Room-high wardrobe, additional wardrobes with extra-large interior height beneath the lengthways single beds
- + Optional: TV cabinet in bedroom with special TV pull-out system



**Chassis:** Fiat Ducato AL-KO low frame 35 light  
**Ready-to-drive weight from:** 2,975 kg  
**Additional loads up to:** 1,235 kg



- + Comfort Plus floor plan
- + Large L-shaped seating group with wide side seat bench, (optional 5th seat belt location)
- + Large corner kitchen with curved worktop
- + Comfort luxury washroom with changing room by means of sliding door in sleeping area and washroom door room dividing function
- + 200 cm lengthways single beds with pull-out access steps
- + Wardrobes beneath the lengthways single beds with large interior height
- + Optional: TV cabinet in bedroom with special TV pull-out system



**Chassis:** Fiat Ducato AL-KO low frame 35 light  
**Ready-to-drive weight from:** 3,005 kg  
**Additional loads up to:** 1,205 kg



- + Comfort Plus floor plan
- + Large L-shaped seating group with wide side seat bench, (optional 5th seat belt location)
- + Large corner kitchen with curved worktop
- + Comfort luxury washroom with changing room by means of room partitioning
- + Large queen-size bed, easy access to the bed
- + Pull-out room divider and TV wall for individual room partitioning between sleeping/changing area
- + Two wardrobes at side of bed
- + Two large drawers at front of queen-size bed



**Chassis:** Fiat Ducato AL-KO low frame 35 light  
**Ready-to-drive weight from:** 2,985 kg  
**Additional loads up to:** 1,225 kg



## Exterior

### Standard light grey/white

Bodywork light grey/white, vehicle front white, A-pillar, front, side, rear skirt and wheel arches white



## Interior

### Standard “epic bicolor” World of Style

Furniture surfaces with modern bicolor look made from bright ash tree and high-gloss ivory fronts with chrome applications



▲ Living room floor PVC floor covering in Fineline parquet in caramel.  
Optional: removable carpet.

### Standard Casablanca world of style

Furniture surfaces with modern bicolor look made from noble cherry and high-gloss ivory fronts with chrome applications



▲ Living room floor PVC floor covering in Fineline parquet in caramel.  
Optional: removable carpet.



# Carthago lightweight construction technology

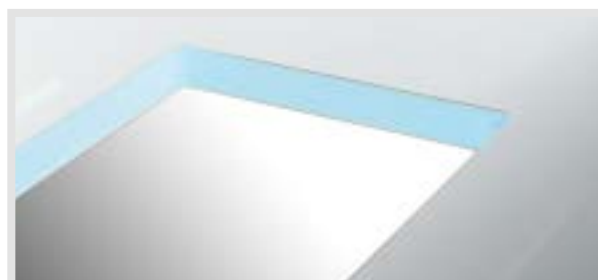
Down with the weight, up with the quality - specially for the 3.5 t weight class

Extremely stable and super light: Carthago is the pioneer for intelligent lightweight construction throughout the industry. Intelligent means: Carthago reduces the weight, but not the customary comfort or quality. The Carthago c-tourer T vehicles are the lightest models in their class. With maximum stability, quality, maximum comfort and a comprehensive range of equipment.

The consistent lightweight construction technology has many advantages: more payload and less fuel consumption and emissions at the same time.

## Your added value with Carthago

- + **More payload** also in the 3.5 t weight class
- + **Lower fuel consumption**
- + **Fewer restrictions** because of road traffic regulations
- + **Fewer toll charges**



- ▲ The Carthago main body construction technology is highly stable and light. The combination of aluminium on the outside and the inside and the RTM hard foam insulating core which are typical of the brand allows Carthago to dispense with weight-intensive wall reinforcements.



**Lightweight premium class**  
Carthago lightweight construction technology, specially for the 3.5 t weight class



- ▲ Carthago weight-optimised furniture design: thanks to the piping technology, the curved and rounded moulded furniture parts have high stability and less weight at the same time



- ▲ With the self-supporting main body and the light AL-KO low frame, the Carthago double floor contributes to providing maximum stability and torsional rigidity



Usable height  
up to 55.5 cm

## Double floor basement with massive storage compartment

EASY ENTRY – convenient loading from the  
outside, easy removal from the inside



DRIVER'S SIDE

▲ Gas bottle compartment



Rear garage  
can be loaded  
up to  
**350 kg**

▲ Scooter garage with considerable interior height  
thanks to deep lowering, accessible at both sides via  
a large door at the passenger side and a second door  
at the driver's side

Exterior loading



▲ Convenient loading of the double floor storage  
compartment via a large external hatch

Unload from the inside

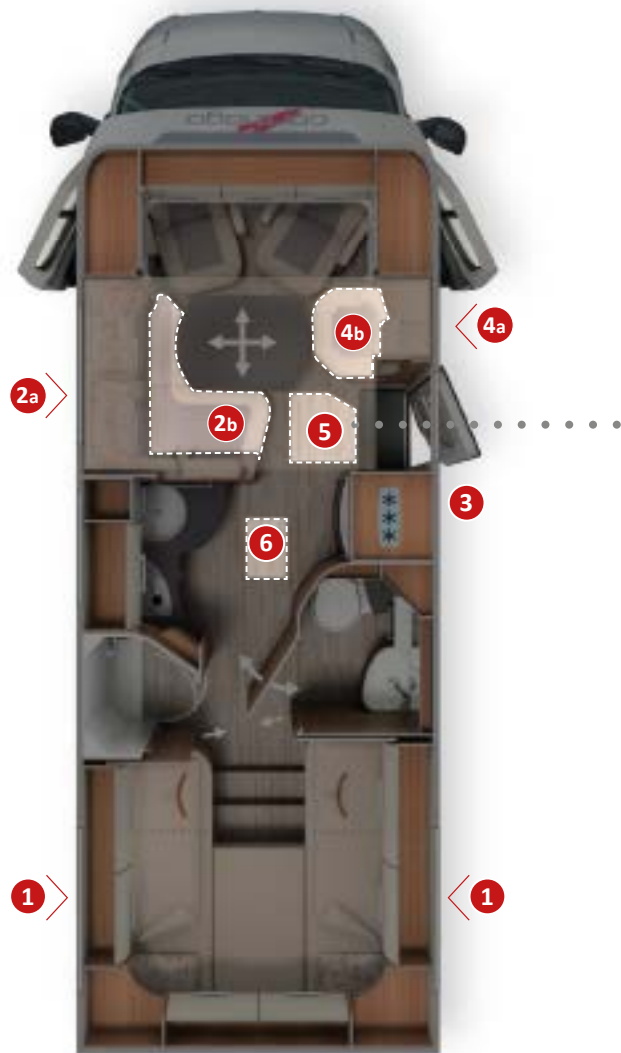


▲ Easy removal of storage compartment contents from the  
inside via the swing-up seat bench cover of the L-shaped  
lounging seating group

Further double floor  
basement storage



▲ Living area floor hatch with double floor storage box  
(42 cm usable depth) in heated double floor





- + **Double floor basement** with massive, heated storage compartment, usable height up to **55.5 cm**
- + **Exterior access** via several large hatches
- + Convenient **interior access** via the L-shaped lounge seating group seat bench cover, side seat bench and the large living area floor hatch
- + **Large, central through-loading space** (interior height 22 cm), with extra-low basement storage compartment (usable height 46 cm), convenient loading through the entrance door via a large, adjustable living area floor hatch
- + The entire double floor is heated with a **climate storage function** and underfloor heating effect



#### PASSENGER SIDE



- ▲ Large, additional double floor storage compartment with separate external hatch (depending on model)



- ▲ Convenient loading of the double floor storage compartment via a large external hatch (depending on model)

Load from the outside



- ▲ Massive floor hatch in entrance area: easy to load from the outside when main cabin door is open



- ▲ Convenient removal of contents via swing-up side seat bench

Unload from the inside



## On-board technology

Electrical technology, water supply, hot air storage heating technology



**Hot air storage –**  
heating system Truma Combi 6



**Double-floor basement**  
heated with a climate storage function  
and underfloor heating effect



**Capacity**  
150 l fresh water tank  
140 l waste water tank  
1 x 80 Ah gel battery  
(can be increased to 2 x 80 Ah)



▲ **Targeted heating of driver's cab area** via additional hot air outlet under driver's cab seat.



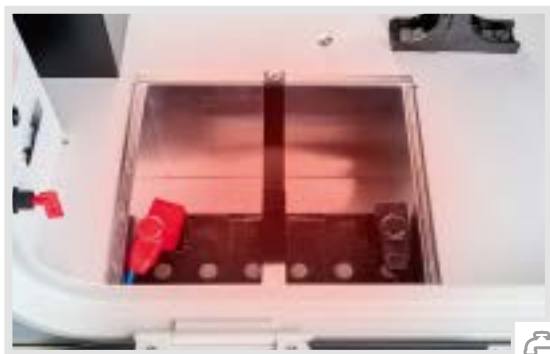
▲ **Truma Combi 6 heat storage heating system** with numerous warm air outlets in the entire double floor basement, the living area, the rear garage, the driver's cab and the cold-sensitive door entrances



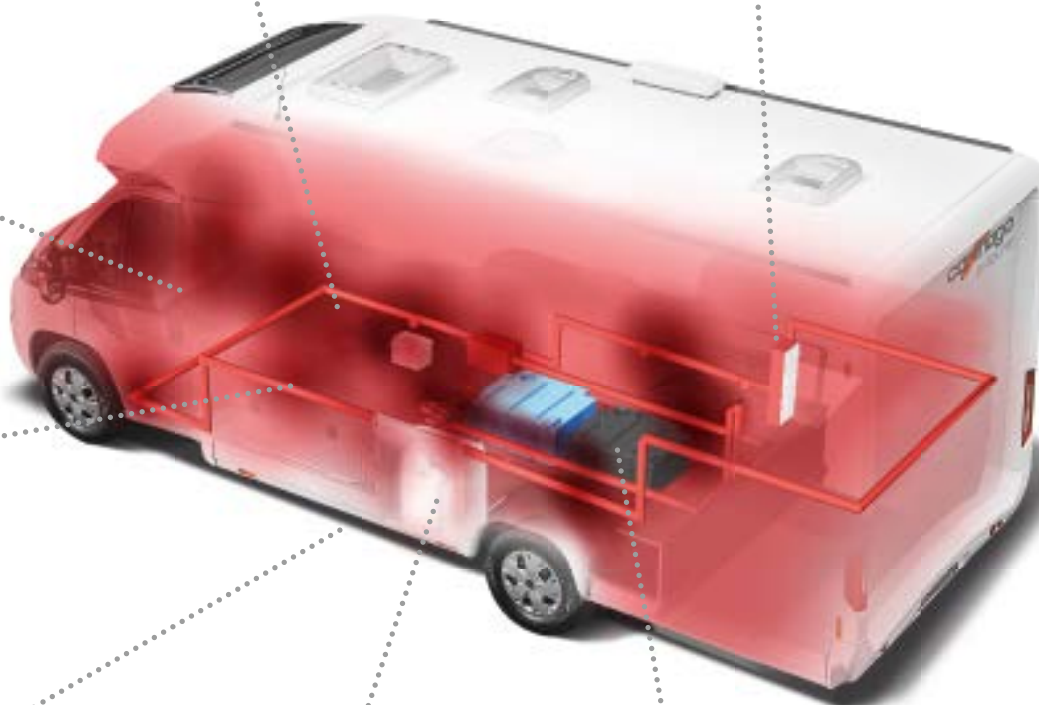
▲ **"easy change" gas bottle compartment**, low for convenient bottle changing (except T 143 LE)



- ▼ **Heated battery centre** with main battery switch, standard:  
Gel batteries 1 x 80 Ah, can be increased to 2 x 80 Ah,  
optional Lithium ion battery 90 Ah including battery computer



- ▼ **Easily accessible electric centre in the rear garage**



- ▲ **Gas bottle compartment** (model T 143 LE) with easy access via  
separate gas compartment door. Optional: Gas bottle pull-out



- ▲ **Central water drain in the double floor basement** – can also  
be operated from the outside through the main cabin door



### GRP cab pod



- ▲ Above the driver's cab, attractive shape, high-quality GRP, jointed and insulated all-round

### Main cabin door "premium one"



- ▲ With door limiter and door window

### Central locking



- ▲ Using hand transmitter in the main key for the drivers cab doors

### Driver's cab pilot seats



- ▲ With armrests on both sides, adjustable in several directions, headroom in living mode at lounge seating group level

### Electrical entrance step



- ▲ To living area: electrically extendible/retractable

### Gas bottle compartment



- ▲ Low, comfortable bottle changing (model T 143 LE: position in front of scooter garage)



### Garage access from both sides



- ▲ Convenient access via large door at passenger side and second door at driver's side

### Driver's cab storage compartment



- ▲ Thanks to the all-round overhead storage cabinets with front flaps and indirect lighting

### Living area on one level



- ▲ Continuous from driver's cab to the sleeping area

### Shoe cabinet



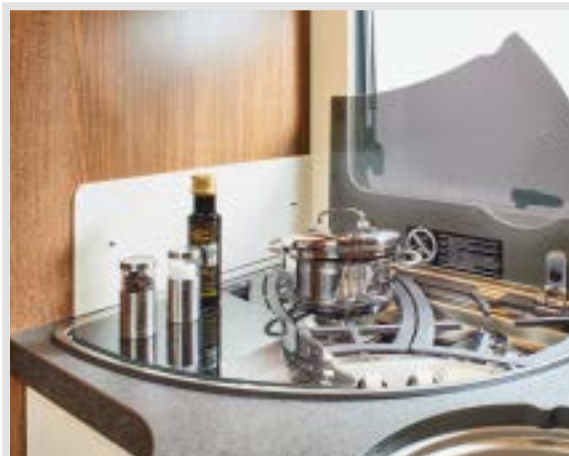
- ▲ Below the lounge seating group in the entrance area with shoe storage system

### Kitchen worktop



- ▲ With scratch resistant surface in shale décor, lit from underneath with LED light strip and practical worktop extension

### Professional gourmet cooker



- ▲ With 3 hobs, glass top, cast iron grate and split glass cover (depending on model)

# chic c-Line

## The fascination of the Carthago Premium Class

Elegance, comfort and extravagance

Luxurious, extravagant, comfortable and thoroughly practical: The chic c-line T comes up trumps with regard to payload, storage space, top class driving comfort, modern design and pure living comfort. Its charm sets the chic c-line T apart from the wide range of semi-integrated vehicles that are available on the market.



### Weight class

- + Comfort conscious floor plans with up to 4.5 t permissible gross vehicle weight



AL-KO

### Chassis

- + Fiat Ducato with AL-KO low frame 35 light/40 heavy. Wide wheelbase rear axle 198 cm
- + Safety package as standard: Airbag, ESP, ABS, hill holder, traction control
- + Optional: Fiat driver's assistance package



### Living comfort

- + "Exclusiveline" furniture design, flowing stylistic elements, rounded, exclusive furniture surfaces, two worlds of style to choose from
- + L-shaped lounge seating group with side bench and rectangular living room table
- + Comfortable corner kitchen with coffee machine lift and slide-out storage cabinet
- + Washroom variants with a great deal of comfort and separate changing room
- + Fixed beds with Carawinx sleeping system





### Storage space

- + Double floor basement with huge, heated storage space, usable height up to 70 cm
- + Exterior access via several large hatches, convenient access from the inside via the seat bench cover of the L-shaped lounge seating group and the swing-up side seat bench
- + Large, central through-loading space (interior height 22 cm), with extra-low basement storage compartment (usable height 46 cm), convenient loading inside and outside via a large, adjustable living area floor hatch
- + Scooter garage: interior height up to 120 cm\*, load capacity up to 350 kg



### Self-sufficiency/technology

- + 170 l fresh water, 140 l waste water
- + 2 x 80 Ah gel batteries



### Air conditioning/heating

- + Truma Combi 6 warm air storage heating system, optional Alde warm water heating\*
- + Double floor basement with underfloor heating effect



\* depending on model

chic c-line



**chic c-line T 4.9 LE** in linea classica and leather Macchiato world of living

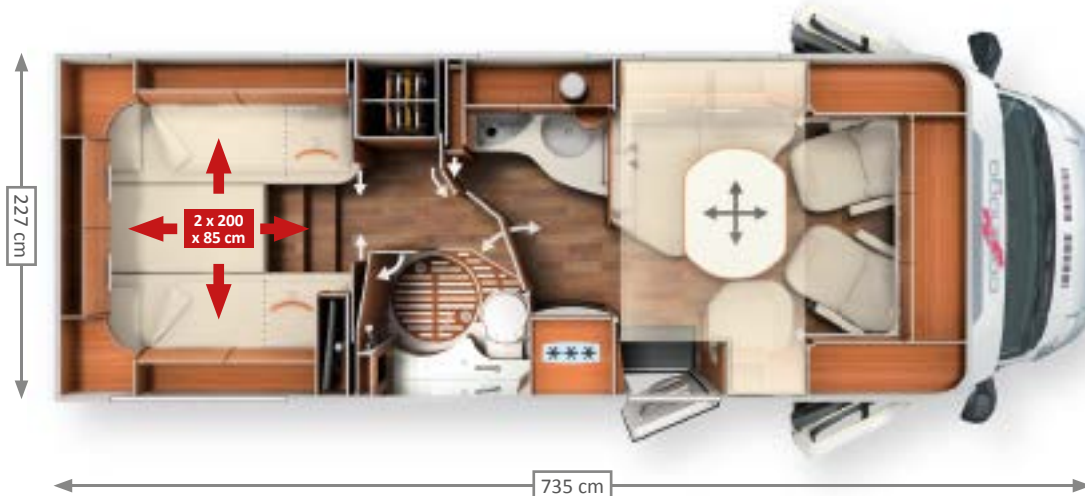




chic c-line T

## chic c-line T 4.8 LE

Number of seats with 3-point safety belt: 4/5\* Number of sleeping berths: 2/3-4\*



**Chassis:** Fiat Ducato AL-KO low frame 35 light  
**Ready-to-drive weight from:** 3,150 kg  
**Additional loads up to:** 1,310 kg

- + Solid wooden sliding door for separating the changing room from the sleeping area
- + Room-high wardrobe



### Large L-shaped lounge seating group with side seat bench

- + Rectangular living room table, optional 5th belted seat
- + Pull out system for 24" television behind side seat bench back rest



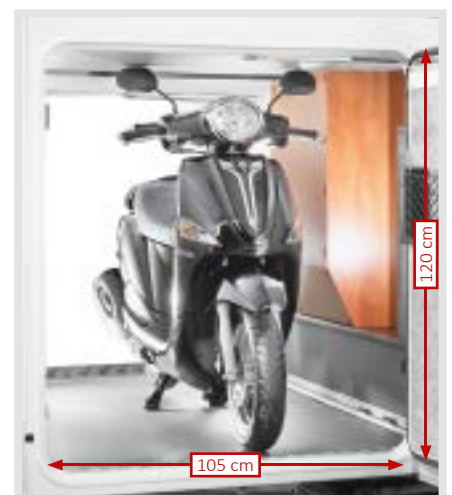
### Large lengthways single beds

- + Adjustable head sections
- + Wardrobe beneath the lengthways single beds, easily accessible from the front and above via the lift function – lowered into the double floor for additional volume
- + Sleeping area expansion between the beds via an additional mattress, access via pull-out access step (without ladder)
- + Standard TV cabinet, optional extra long TV pull-out system



### Corner kitchen

- + Large work surface
- + Kitchen area with six large drawers and integrated waste bin
- + "Professional gourmet" 3-ring hob with divided glass cover, robust cast iron grate and easy-clean glass surface
- + 160-l fridge incl. 30-l freezer compartment at hand height
- + Coffee machine lift, can be lowered out of overhead storage compartment
- + Bar cupboard with decorative glass door and interior lighting
- + Room-high slide-out storage cabinet



### Space saving combination washroom with changing room

- + Separate round shower
- + Large mirror cabinet with shelving
- + Solid washroom door with interior hinges, metal handle and door lock
- + Washroom door with room dividing function from living area

\*with options





▲ chic c-line T 4.8 LE in linea classica world of style, leather Macchiato world of living



▲ Corner kitchen with professional gourmet hob



▲ Combination bathroom with changing room function



▲ Room-high wardrobe



▲ Lengthways single beds with wardrobes underneath and extendible access steps



## chic c-line T 4.9 LE

Number of seats with 3-point safety belt: 4/5\* Number of sleeping berths: 2/3-4\*



**Chassis:** Fiat Ducato AL-KO low frame 35 light  
**Ready-to-drive weight from:** 3,150 kg  
**Additional loads up to:** 1,310 kg

+ Wash/toilet room double function door for simultaneous separation of living room passage and toilet room



### Large L-shaped lounge seating group with side seat bench

- + Rectangular living room table, optional 5th belted seat
- + Pull out system for 24" television behind side seat bench back rest



### Lengthways single beds

- + Adjustable head sections
- + Wardrobes underneath the lengthways single beds, easily accessible from the front and above via the lift function – double floor lowered for additional volume
- + Sleeping area expansion between the beds via an additional mattress, access via pull-out access step (without ladder)
- + Standard TV cabinet, optional extra long TV pull-out system



### Luxury corner kitchen

- + Large, curved work surface
- + Kitchen area with six large drawers and integrated waste bin
- + "Professional gourmet" 3-ring hob with divided glass cover, robust cast iron grate and easy-clean glass surface
- + 160-l fridge incl. 30-l freezer compartment at hand height
- + Coffee machine lift, can be lowered out of overhead storage compartment
- + Bar cupboard with decorative glass door and interior lighting
- + Slide out storage cabinet integrated in the round bathroom wall



### Comfortable luxury bathroom with changing room

- + Large washroom/toilet room
- + Separate shower
- + Solid wooden sliding door with room dividing function, separating the changing room from the sleeping area and the living area

\*with options



▲ chic c-line T 4.9 LE in linea classica world of style, leather Macchiato world of living



▲ TV pull-out system behind backrest



▲ Wardrobes beneath the lengthways single beds with extra-large interior height



▲ Luxury corner kitchen with curved worktop



▲ Luxury washroom with separate shower



▲ Lengthways single beds with wardrobes beneath



Optional patented  
Pedelec scooter garage  
with interior height  
adjustment\*:  
leading by means of  
innovation

## chic c-line T 5.0 QB

Number of seats with 3-point safety belt: 4/5\* Number of sleeping berths: 2/3-4\*



**Chassis:** Fiat Ducato AL-KO low frame 35 light  
**Ready-to-drive weight from:** 3,155 kg  
**Additional loads up to:** 1,305 kg



### Large L-shaped lounge seating group with side seat bench

- + Rectangular living room table, optional 5th belted seat
- + Pull out system for 24" television behind side seat bench back rest



### Luxury corner kitchen

- + Large work surface
- + Kitchen area with six large drawers and integrated waste bin
- + "Professional gourmet" 3-ring hob with divided glass cover, robust cast iron grate and easy-clean glass surface
- + 160-l fridge incl. 30-l freezer compartment at hand height
- + Coffee machine lift, can be lowered out of overhead storage compartment
- + Bar cupboard with decorative glass door and interior lighting
- + Slide out storage cabinet integrated in the round bathroom wall



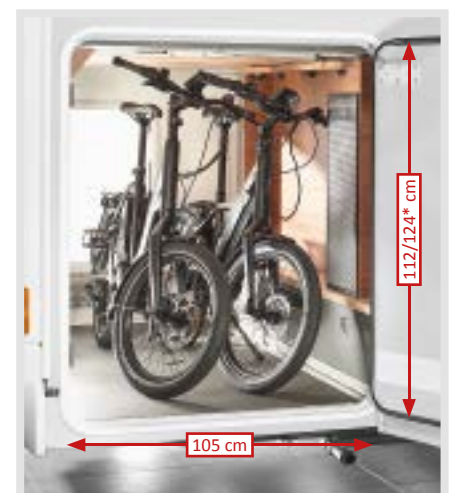
### Comfortable luxury bathroom with changing room

- + Large washroom/toilet room
- + Separate shower
- + Wash/toilet room double function door for simultaneous separation of living room passage and toilet room



### Large queen-size bed

- + Unique: extendible room divider and TV wall for partitioning the washroom area incl. TV holder, enjoy watching wireless TV in two positions
- + Adjustable head section
- + Two wardrobes at each side of queen-size bed
- + Two drawers at front of queen-size bed



\*with options





▲ chic c-line T 5.0 QB in linea moderna world of style, part-leather Macchiato world of living



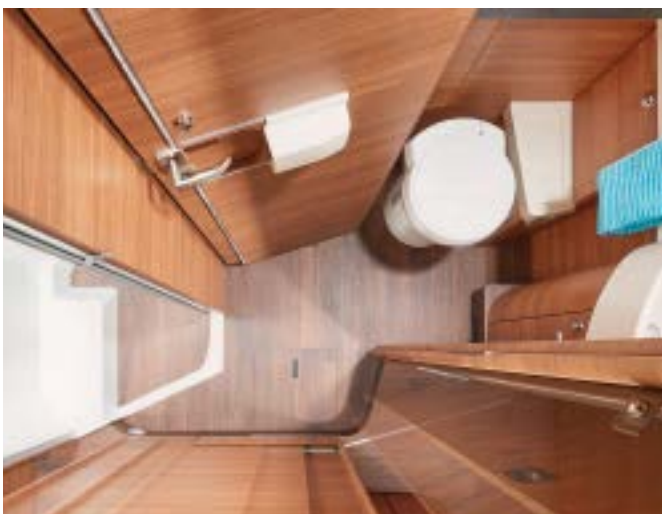
▲ TV pull-out system behind backrest



▲ Two drawers at front of queen-size bed



▲ Luxury corner kitchen with curved worktop



▲ Comfortable spacious washroom with changing room



▲ Extendible TV wall in TV centre position

## Exterior



### **Standard White**

**Main cabin white, Vehicle front white, A-pillar, front, side and rear skirting and wheel arches silver-platinum**



### **Optional Silverline**

**Main cabin silver, Vehicle front silver, A-pillar, front, side and rear skirting and wheel arches silver-platinum**

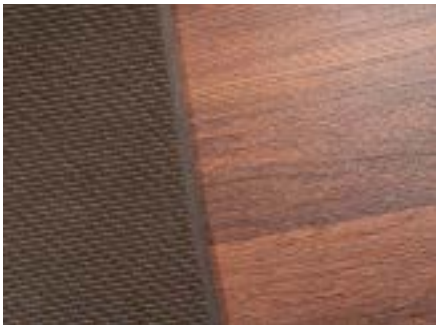




# Interior

## Standard Style world linea classica

Furniture surfaces in wild pear with channelling and chrome inlay



▲ Living area floor with PVC floor covering in Missouri ship's parquet.  
Optional: removable carpet.

## Optional Style world linea moderna

Furniture surfaces with modern bicolor look made from golden wattle and high-gloss ivory fronts with channelling and chrome inlay



▲ Living area floor with PVC floor covering in Missouri ship's parquet.  
Optional: removable carpet.



## Double floor basement with massive storage compartment

EASY ENTRY – convenient loading from the outside, easy removal from the inside



Usable height  
up to 70 cm



DRIVER'S SIDE

▲ Gas bottle compartment

Load from the outside



▲ Convenient loading of the double floor storage compartment via a large external hatch (at driver's side)

Unload from the inside



▲ Easy removal of storage compartment contents from the inside via the fold-up seat bench cover of the L-shaped lounge seating group

Other double floor basement  
storage compartments

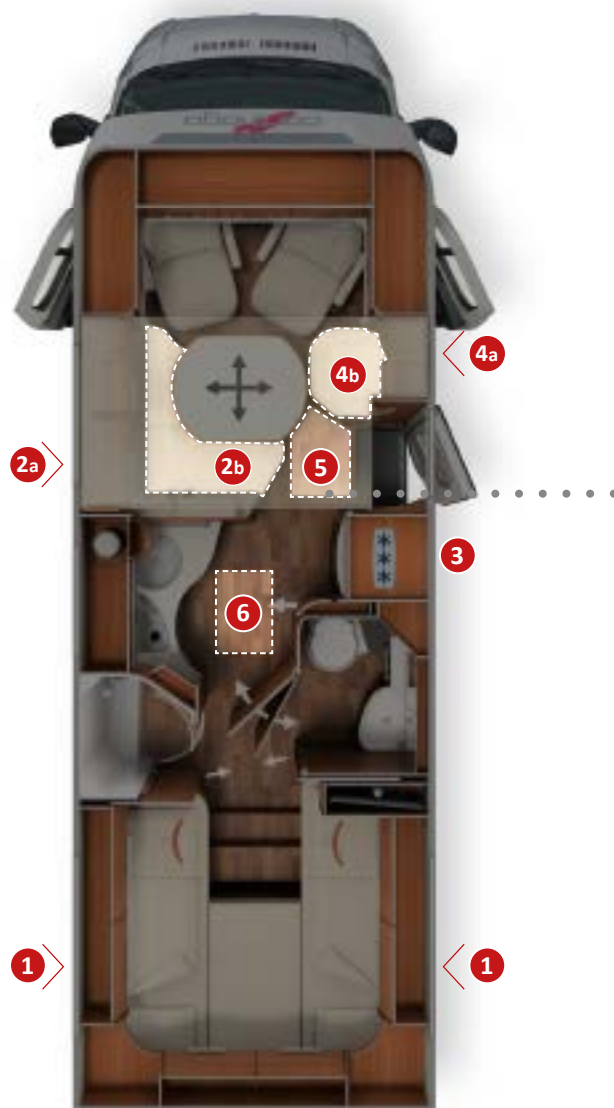


▲ Living area floor hatch with double floor storage box (42 cm usable depth) in heated double floor



Rear garage  
can be loaded  
up to  
**350 kg**

▲ Scooter garage with considerable interior height thanks to deep lowering, accessible at both sides via a large door at the passenger side and a second door at the driver's side



- + **Double floor basement** with massive, heated storage compartment, usable height up to 70 cm
- + **Exterior access** via several large hatches
- + Convenient **interior access** via the L-shaped lounge seating group seat bench cover, swing-up side seat bench and the large living area floor hatch
- + **Large, central through-loading space** (interior height 22 cm), with extra-low basement storage compartment (usable height 46 cm), convenient loading through the entrance door via a large, adjustable living area floor hatch
- + The entire double-floor basement is heated with a **climate storage function** and underfloor heating effect



#### PASSENGER SIDE



- ▲ Large, additional double floor storage compartment with separate exterior hatch (at the passenger side)



- ▲ Convenient loading of the double floor storage compartment via a large external hatch

Load from the outside



- ▲ Massive floor hatch in entrance area: easy to load from the outside when main cabin door is open



- ▲ Convenient removal of contents via the swing-up side seat bench

Unload from the inside



## On-board technology

Electrical technology, water supply, hot air storage heating technology



### Hot air storage

heating system Truma Combi 6



### Optional: ALDE warm water central heating



### Double floor basement

with climate storage function and underfloor heating effect



### Capacity

170 l fresh water tank  
140 l waste water tank

2 x 80 Ah gel battery



▲ **Targeted heating of driver's cab area** thanks to heated dashboard front and additional hot air outlets



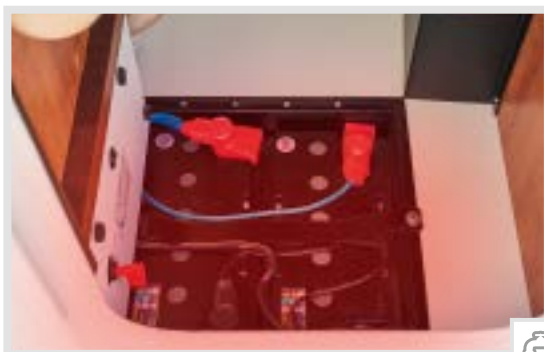
▲ **Truma Combi 6 Heat storage heating system**  
**Truma Combi 6** with hot air outlets in the entire climate storage double floor, in the living area, in the rear garage, in the driver's cab and in the door entrances



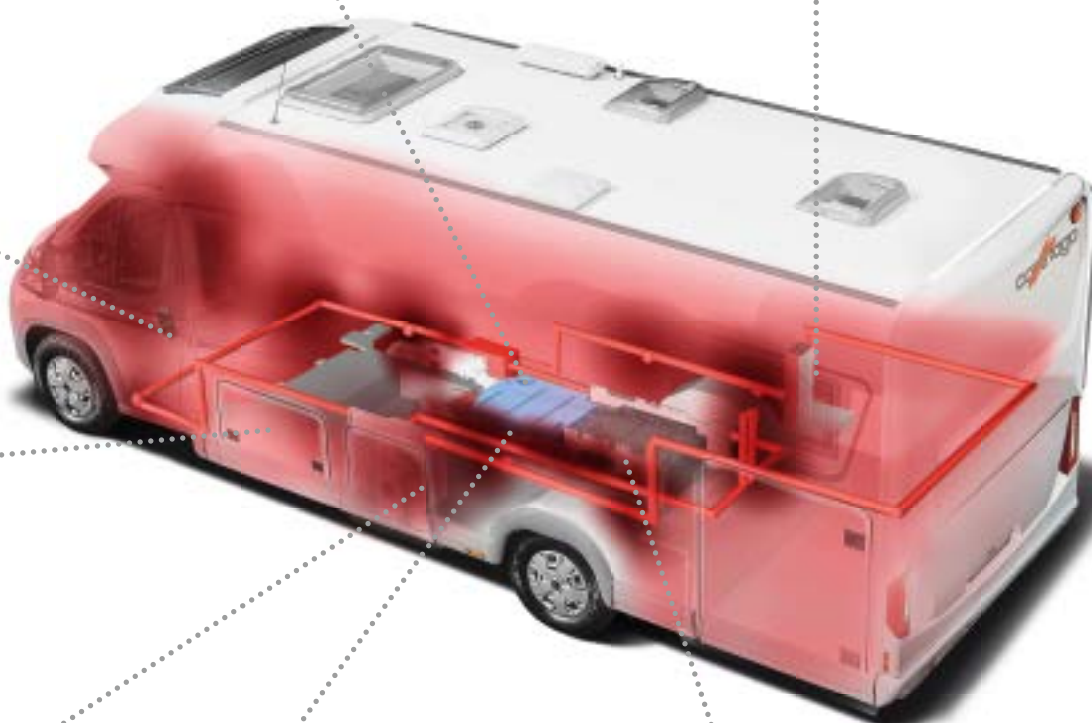
▲ **"easy change" gas bottle compartment**, extra-low for convenient bottle changing



▼ **Heated battery centre** with main battery switch, standard: gel batteries 2 x 80 Ah, optional Lithium ion battery 90 Ah including battery computer



▼ **Electrics centre easily accessible in rear garage**



▲ **Water tanks protected from frost in heated double floor**



▲ **Central water drain in the double floor basement – can also be operated from the outside through the main cabin door**

## “Coming Home” function



- ▲ With central locking: driver's cab doors via remote control in main key, exterior light activation

## Main cabin door “premium two”



- ▲ With safety double locking system, door limiter, door window and insect screen blind

## Driver's cab pilot seats



- ▲ With armrests on both sides, adjustable in several directions, headroom in living mode at lounge seating group level

## Single level living area floor



- ▲ Single level living area floor throughout, from the driver's cab to the sleeping area

## Driver's cab storage space



- ▲ Thanks to all-round overhead storage cabinets with front flaps

## Shoe cabinet



- ▲ In seating group in entrance area with shoe storage system



### Ambient lighting



- ▲ With infinitely variable dimming function (mood light)

### 360° luxury table



- ▲ Can be moved in two directions and rotates 360° for optimal integration of all seats

### Professional gourmet cooker



- ▲ With 3 hobs, easy-clean glass top, iron grate and split glass cover

### Slide-out storage cabinet



- ▲ Practical storage space with easy access at hand height (T 4.8 LE room height)

### Coffee machine lift



- ▲ Can be lowered from the kitchen overhead storage compartment (lift standard, coffee machine and coffee capsule machine optional)

### Carawinx sleeping system



- ▲ Medically recommended, point-elastic under springing system in rear bed



# World of living

## + Very high quality Antara / fabric combination:

Antara with highly effective "Teflon Repel" stain protection, contrasting fabric with dirt-repellent stain resistance

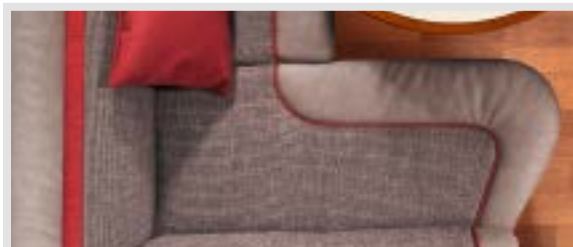
## + Very high quality textile leather / fabric combination:

extremely hard-wearing textile leather in soft Nappa quality, contrasting fabric with dirt-repellent stain resistance

Barcelona



Ancona



Toulouse



Malaga



Venezia



## Worlds of Living selection

Collection	Type	c-tourer T		chic c-line T	
		epic bicolor	Casablanca	linea classica	linea moderna
Barcelona	Fabric	●	●	●	●
Toulouse	Fabric	–	●	●	●
Venezia	Fabric	●	●	●	–
Ancona	Textile leather / fabric	○	○	○	○
Malaga	Textile leather / fabric	○	○	○	○
Ivory	Part leather	○	○	○	○
Macchiato	Part leather	○	○	○	○
Savannah	Part leather	○	–	○	○
Ivory	Leather	○	○	○	○
Macchiato	Leather	○	○	○	○
Sand	Leather	○	○	○	○
Stone bicolor	Leather	○	○	○	–

● Standard equipment    ○ optionally available    – not available

- + **Very high quality leather finish:**  
classy combination of leather with  
outstanding quality

Bicolor leather Stone



- + **Very high quality leather / Antara combination:**  
outstanding quality leather, contrasting fabric  
with dirt repellent stain protection

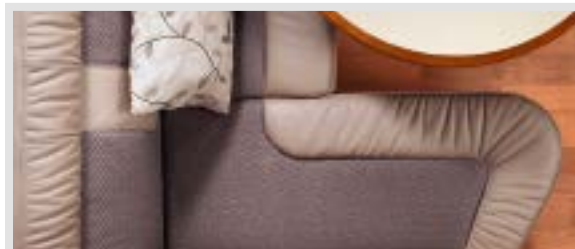
Ivory part leather



Ivory leather



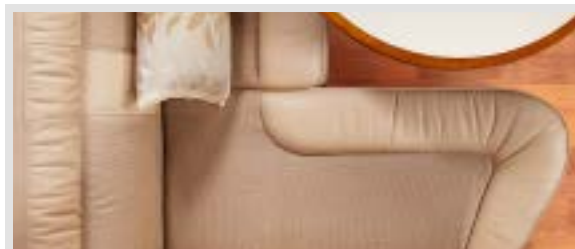
Macchiato part leather



Macchiato leather



Savannah part leather



Sand leather



## Your added value with Carthago

- + **Highly effective stain protection**
- + **Fluids do not penetrate the fabric**
- + **Excellent anti-fade properties**
- + **Hard-wearing and easy to look after**
- + **Washable curtains and decorative pillow covers**
- + **Antibacterial mattress cover**



▲ **Highly effective stain protection systems protects your upholstery**

# The Carthago Premium DNA

## More than a good feeling

Innovative thinking, an eye for detail, extravagant solutions and consistent development focus on a high degree of practical use, the perfect combination of high-tech lightweight construction materials, intelligent processing and pioneering spirit. These are the ingredients for our unique overall vehicle concept.

They are deeply rooted in our **Carthago Premium DNA**. It is an incentive and an obligation at the same time: The Carthago Premium DNA is our value promise to each Carthago customer, and brings together that which characterises every one of our motorhomes - and at the same time, it expresses how a Carthago differs from other motorhomes. Our core expertise is in motorhomes

in the liner premium class. This because our **40 years of experience** in this industry flow into every stage of development and manufacturing. We think that only the best is good enough for your comfort and your safety! The materials and construction technologies that we use and the demands that are made of their weight and stability have many similarities with aviation technology.

In this way we can offer you a high degree of durability and value retention, safety, protection and comfort. In this way, each Carthago motorhome becomes something special. Each Carthago is therefore a **synonym for exclusivity and quality**. Or, to put it briefly, it stands for "The motorhome".

Long-lasting. High stability.

**Carthago Liner premium-class body construction**

Space guaranteed.

**Carthago double floor basement with massive storage compartment**

Well-balanced. Optimum distribution.

**Carthago payload & weight and balance**





Well-being – all year round.

### **Carthago heating & air conditioning technology**

Unique. Unmistakable.  
Extravagant.

### **Carthago Personality**

# Liner premium-class body construction

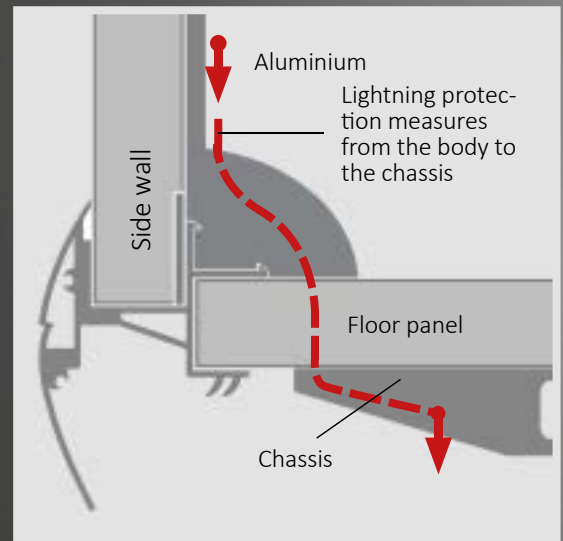
## Longevity, protection and value retention

The Carthago main body construction is consistently oriented to that which Carthago drivers want: carefree travelling in the long term, and value retention. We therefore rely on **long term quality**. GRP and aluminium are used where they are most effective. For your

protection and your comfort, even in event of hail, moisture, lightning and cold conditions. The unique chassis connection via extremely **stable frame members** is the guarantee of maximum torsional stiffness. Quality that you can feel – journey after journey, year after year.

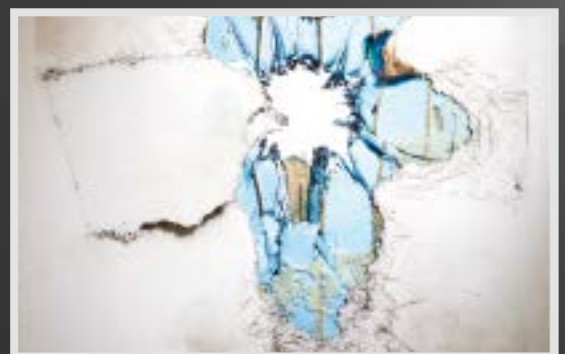
## Your added value with Carthago

- + Protection against lightning strike, hail and moisture
- + 10-year warranty against leaks
- + Easy to repair in the event of any damage
- + Stone chipping and underride protection



### ▲ Tested lightning protection

Aluminium on the roof and the inner walls provides similar protection to a Faraday cage. Additional lightning conductors in the chassis significantly increase this protection effect. The lightning protection test has proven: A Carthago main cabin provides verified protection against lightning strikes!



### ▲ Lightning penetration

with conventional GRP roof with wood/GRP roof interior.



**10-year warranty  
against leaks!**



▲ **Hail protection**

and cheaper insurance premiums thanks to the GRP roof top. The special feature: the protective effect against lightning strike remains thanks to the aluminium on the inside of the roof.



▲ **Moisture protection**

Effective protection from hail and cheaper insurance premiums thanks to the GRP roof top.



**Tested lightning  
protection**



▲ **Stone chipping protection / underride guard**

The GRP underfloor provides long-term protection from stone chippings, rotting and moisture. Throughout the years – without the cost of maintenance! The lowered frame of the scooter garage simultaneously acts as an underride guard and reduces collision damage.



▲ **Ease of repair**

Considerable attention is paid to segmentation during the development of the main body components. This makes replacement easier in the event of damage and reduces costs. For example, there is a separately replaceable rear bumper at the rear of every vehicle.



# Liner premium-class body construction

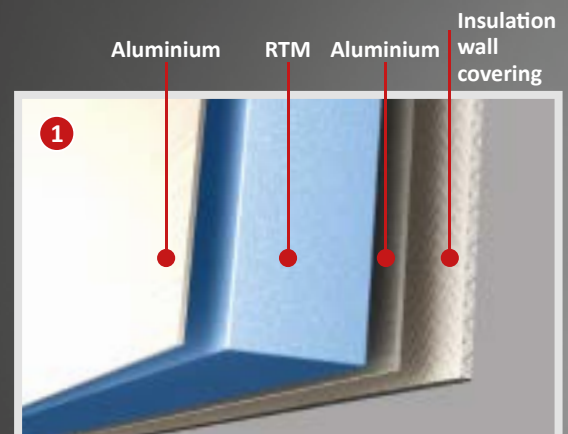
## Advanced technology borrowed from aircraft construction

Carthago bodies have strong and durable connections. Where others use screw connections, we apply high-tech. As well as a high degree of stability, a main body reinforced with **frame members** and **special bonding technologies** also provides a clear plus with regard to safety. The frame member for connecting the floor and

the side walls acts as side collision protection if the worst comes to the worst. Thanks to features borrowed from aircraft construction, the main cabin is not only highly stable, but also light and torsionally rigid.

## Your added value with Carthago

- + **Durability and value retention**  
for many years
- + **Perfect insulation and heat storage**  
for year-round comfort
- + **Maximum body stability**  
and torsion resistance, the decisive contribution for driving comfort and driving safety
- + **Light vehicle weight**  
due to self-supporting body design
- + **100 percent wood-free body**  
no rotting possible – also over the long term



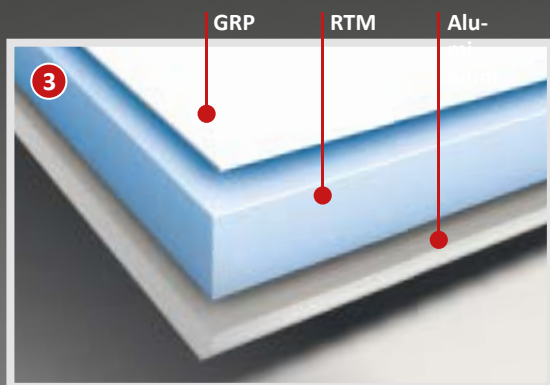
### ▲ Carthago side wall construction

Having aluminium not just on the exterior but also the interior of the walls is a prerequisite for efficient heat storage. This produces the typical Carthago well-being climate. The homogeneous heat radiation acts like a wall heater.



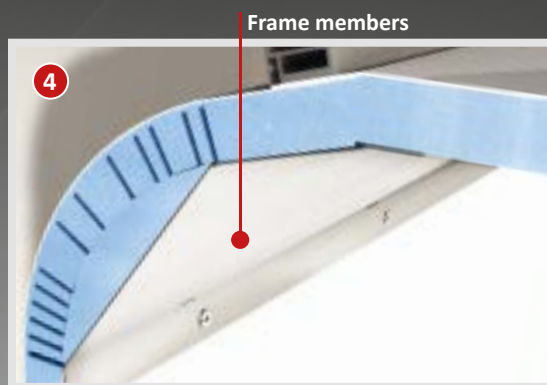
### ▲ Carthago lower-level scooter garage

Deep lowering of the scooter garage means maximum storage space and minimal effort when loading. Extremely strong wall to floor connection due to form-fitted and bonded frame members makes loading of up to 350 kg possible.



#### ▲ Carthago roof structure

Having GRP on the exterior means protection from hail, and having aluminium on the interior means protection against lightning strikes. The aluminium interior also takes over the function of heat storage in winter.

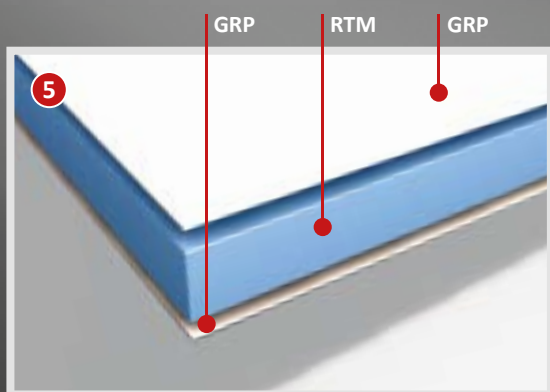


#### ▲ Carthago roof - wall joint

The typical Carthago curved roof is not only an unmistakable design element but with the frame members on the inside, it makes a decisive contribution to the rigidity of the main cabin. And all of this without any thermal bridge whatsoever. Another safety advantage: less susceptibility to side winds.

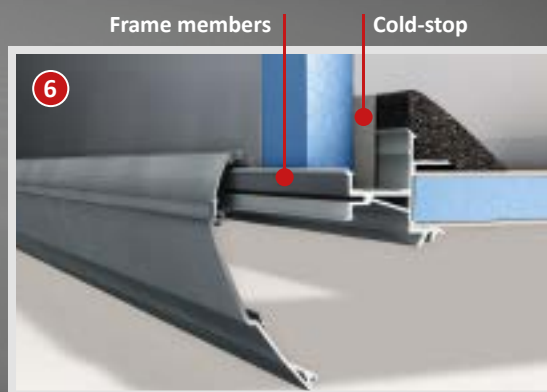


**Body connection  
using high-  
stability frame  
members**



#### ▲ Carthago floor panel

Provides all-round protection. The lower and upper sides are made from GRP, and between them there is a hard foam insulating core made from RTM Styrofoam. The high-stability floor plate has a lifelong protection against humidity and rotting.



#### ▲ Carthago floor - wall joint

Used on both sides via a high-stability frame member. In aircraft construction, it is form-fitted and bonded along the entire length. And if the worst comes to the worst, it has the effect of side collision protection. An integrated thermal bridge stop reliably prevents any thermal bridges.

# Double floor basement with massive storage compartment

## More room for your holiday

You can never have enough storage space in a motorhome! The Carthago semi-integrated models provide a massive amount of storage space and room for all of your holiday luggage thanks to the double floor basement and many storage compartments which are easy to access.

Bulky luggage such as camping furniture and skis can be stowed away in an optimum way in the central through-loading storage compartment. The double floor can easily be loaded from the outside via numerous large exterior hatches.

Large self-supporting living area floor hatches provide access to the extra-deep storage compartments in the living and kitchen areas.

The double-floor basement also acts as a climate store, protecting your cargo from frost.

## Your added value with Carthago

- + **Biggest storage compartment in its class**
- + **Unique, massive double floor basement**
- + **Convenient exterior and interior access "easy entry"**  
load from the outside, unload from the inside
- + **Extra-deep storage compartments for additional usable height**
- + **Lowered storage compartment elaborately manufactured in original bodywork sandwich,**  
therefore maximum stability and high-efficiency insulation
- + **Fully usable storage compartment volume**  
no limitations due to installation of technical components
- + **Weight and balance - weight optimisation**  
and additional payload thanks to maximum usable axle loads and balanced weight distribution between front and rear axle







# Double floor basement with massive storage compartment

EASY ENTRY – convenient loading from the outside, easy removal from the inside



Usable height  
up to 70 cm



DRIVER'S SIDE

▲ Gas bottle compartment

Exterior loading



▲ Convenient loading of the double floor storage compartment via a large external hatch

Unload from the inside



▲ Easy removal of storage compartment contents from the inside via the fold-up seat bench cover of the L-shaped lounge seating group

Other double floor basement storage compartments

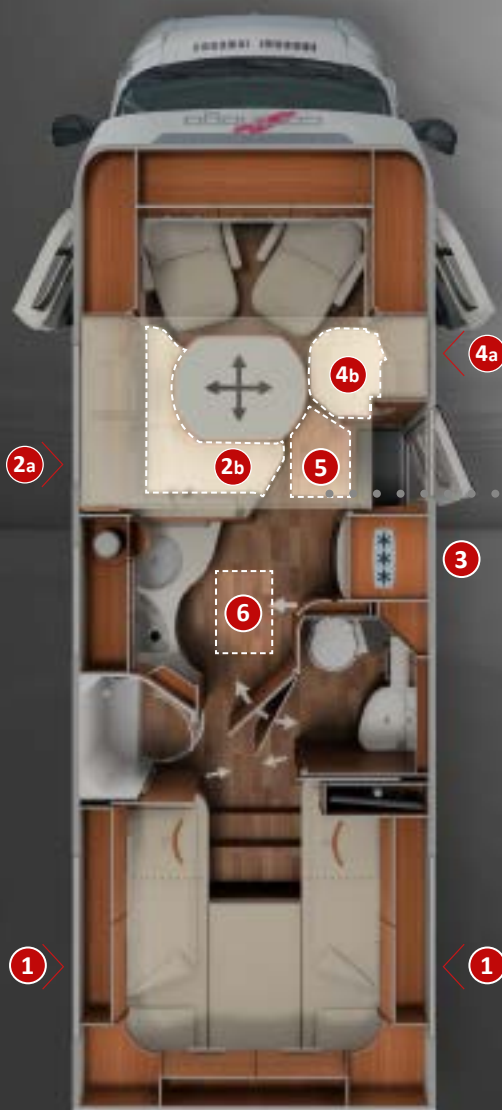


▲ Living area floor hatch with double floor storage box (42 cm usable depth) in heated double floor



Rear garage  
can be loaded  
up to  
**350 kg**

▲ Scooter garage with considerable interior height thanks to deep lowering, accessible at both sides via a large door at the passenger side and a second door at the driver's side







- + **Double floor basement** with massive, heated storage compartment, usable height up to 70 cm
- + **Exterior access** via several large hatches
- + **Convenient interior access** via the L-shaped lounge seating group seat bench cover, the swing-up side seat bench and the large living area floor hatch
- + **Large, central through-loading space** (interior height 22 cm), with extra-low basement storage compartment (usable height 46 cm), convenient loading through the entrance door via a large, adjustable living area floor hatch
- + The entire double-floor basement is heated with a **climate storage function** and underfloor heating effect



PASSENGER SIDE



- ▲ Large, additional double floor storage compartment with separate exterior hatch



- ▲ Convenient loading of the double floor storage compartment via a large external hatch

Load from the outside



- ▲ Massive floor hatch in entrance area: easy to load from the outside when main cabin door is open.



- ▲ Convenient removal of contents via the swing-up side seat bench

Unload from the inside





# Carthago Pedelec Garage

The garage wonder for queen-size bed models with an interior height extension of up to 124 cm

Your big bike, Pedelec or scooter won't fit into the rear garage of your motorhome?

No problem with Carthago's queen-size bed models. This is how it's done: just swivel up the rear bed from the outside **with a single manual operation**, park bike in the garage, **lower the rear bed again**. The Carthago trick: a recess in the floor accommodates the bike. Securely lash

everything – done in a jiffy and handlebar heights of up to 124 cm are possible in combination with the swing-up bottom edge of the bed. In spite of this, the bed is easily accessible inside at any time thanks to the low position. Just another one of the many great Carthago ideas. And because it's so good, we've **registered it for patent**.

## Your added value with Carthago

- + **Interior height extension**  
of the Pedelec garage of up to 124 cm in the queen-size bed models
- + **In spite of low bed access**  
Bike with handlebar height of up to 124 cm can be transported in the rear garage, no unloading required in order to sleep
- + **Innovative solution**  
with no additional weight and simple operation
- + **Cover plate for floor recess,**  
can therefore also be used as additional storage space with a level garage floor



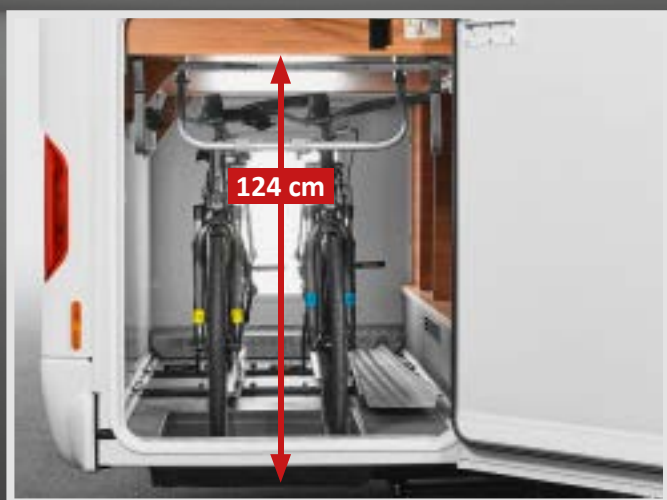
▲ **Easy loading**  
of a Pedelec or motor scooter thanks to the push-in system with hook-on drive-in ramp



▲ **Loading height extension**  
Through simple lifting of the rear beds inside using your hand and additional, lowered floor recess (allows handlebar heights up to 124 cm)



Patented Carthago Pedelec garage – leading by means of innovation



▲ Pedelec scooter garage  
c-tourer and chic c-line (depending on model)

# Carthago payload & weight and balance

## Travel in comfort and safety with a heavy payload

No fear of the scales: A Carthago has reserves, even for large luggage items! You will find a heavy payload in the construction specification of every new Carthago. Because it represents the basis of a high degree of comfort and safety on your travels. It is a natural constituent of the Carthago Premium DNA. A harmonious weight balance is a matter of course for a Carthago. Two or even three-axle load-bearing chassis represent the basis. Clever wheelbases ensure that the weight distribution is favourable, utilise the maximum axle loads and lead to a safe and confident driving style at the same

time. Intelligent lightweight construction technology reduces the weight of the vehicle. Finally, the numerous gross vehicle weight variants ensure that you have exactly the payload that is individually required. Carthago also means not having to forego anything with regard to payload, since holidaymakers do not have to restrict themselves, even on long trips: You can simply take your favourite things from clothing to Pedelecs with you in the massive storage compartments. And the also always has sufficient reserves for taking souvenirs from the vineyard or the fashion store home from your holiday.

## Your added value with Carthago

- + **Maximum travel comfort**  
no restrictions as far as luggage is concerned, and optimum utilisation of the possibly record-breaking storage compartments in the Carthago motorhome
- + **Weight and balance - weight optimisation**  
and additional payload thanks to balanced weight distribution between front and rear axle
- + **Numerous individual weight variants**  
result in individual reserves for each model and each configuration
- + **Maximum visibility on the road**  
no risk due to overloading and over-stressed components, safe driving style

## PRESS OPINIONS

“Carthago constructs its vehicles in a way that is very suitable for winter. This is why the c-tourer also has a double floor. This results in an additional, heated storage compartment with through-loading, as well as a single level living area floor.”

**Camping Revue, 02/2019,**

Technical test of c-tourer T 145 DB H

“With the chic c-line T 4.9, Carthago is showing that the semi-integrated is also good for mobile luxury, as well as for the entry level and middle classes. Heated double floor, large garage and plentiful amount of room are standard in this vehicle. The vehicle design is stylistically unique at Carthago.”

**Reisemobil International, 09/2017,**

Comparison test of chic c-line T 4.9 LE





**Maximum payload reserves – balanced out in the best possible way.**



on the example of a c-tourer T 143 LE, payload reserves per axle depending on the vehicle equipment



▲ **The Carthago double floor**

Together with the high-stability self-supporting main body construction, it contributes to providing a high degree of stability and torsional rigidity, and is extremely lightweight at the same time. A “special light” AL-KO low frame is used exclusively for the lightweight models. Result: minimal vehicle weight – maximum payload.



▲ **Balanced weight distribution**

Large storage compartments and sufficient payload alone are not enough. Carthago uses wheelbases which are coordinated in a model-specific way. The result is an optimum weight balance between the front and rear axle. This is a requirement for a practically-orientated use of the storage space.

# Carthago heating and air conditioning technology

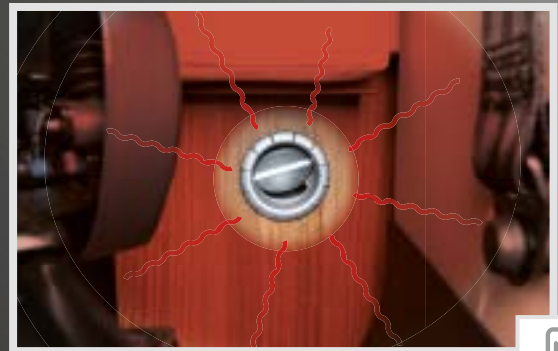
## Cosy and comfortable, just like home

We can't think of any reason why you should have to forego a good climate, regardless of where you are travelling to, and when. For this reason, a Carthago provides year-round comfort thanks to technical refinements such as heat-reflecting walls, targeted heating for on-board technology or heat circulation

through the entire double-floor basement. This provides the best conditions for a **real well-being climate during summer and winter**. Since that which insulates and keeps the heat in during the winter also keeps you cool in the summer.

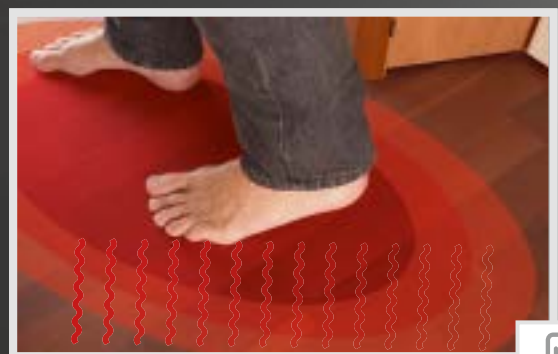
## Your added value with Carthago

- + **Winter-proof motorhome**  
with year-round comfort
- + **Underfloor heating effect** –  
your feet are always warm
- + **No warm air draughts**  
thanks to cold stop at critical points
- + **Even heat distribution**  
and radiation due to the aluminium inner wall
- + **Heat storage effect**  
and efficient insulation reduce gas consumption
- + **Targeted heating**  
of all technology components safeguards functionality



### ▲ Targeted heating of the driver's cab

In all integrated models, the front area of the dashboard has targeted heating. As a result, the double-shell front end acts like an area heater. The living area in the driver's cab therefore has a pleasant temperature without a flow of cold air coming from the vicinity of the windscreen.



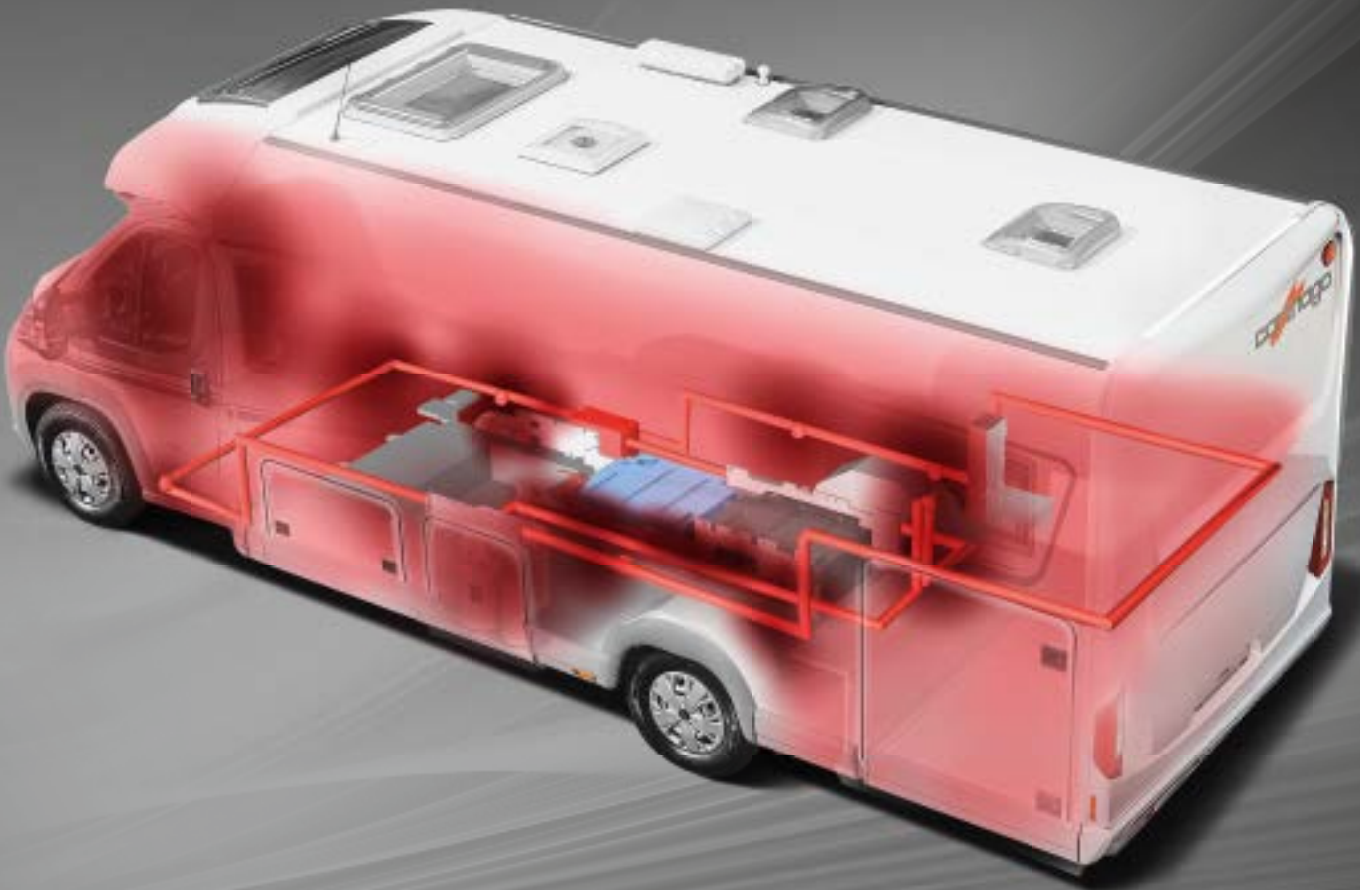
### ▲ Carthago underfloor heating effect

Numerous hot air outlets and heat circulation channels in the double floor basement ensure that the heat is evenly distributed. This heat accumulation radiates upwards towards the floor of the living area and gives it a pleasant warmth. You always have warm feet in a Carthago.





**Aluminium interior walls**  
= 1,000 times better heat  
distribution than traditional  
wooden interior walls



▲ **Heated technical components**

Heaters are a standard feature in motorhomes. Using it to heat the living area is as well. Areas that are sensitive to the cold have additional targeted heating in a Carthago motorhome: all technical components such as tanks, batteries, storage compartments, doorways etc. This is the guarantee of full functionality, even at low minus temperatures.



▲ **Carthago wall heater effect**

Aluminium that is also on the insides of the walls stores the heat that is absorbed and evenly gives it off again. This results in a very pleasant wall heater effect. Aluminium conducts heat 1000 times better than conventional inside walls made from wood.



# Carthago Personality

**Distinctive, unmistakable, unique:** A Carthago is THE face in the crowd. It is as individual as its owner. The evolutionary Carthago design sets standards that go beyond the motorhome industry. **Shape and function** combined into a perfect symbiosis. Powerful radiator grille and elegant cab mask, stylishly rounded transition from side wall to roof, offset sills and a sturdy rear – with the subtle decals, this all combines to produce the typical Carthago look. With harmonic shapes and flowing lines.

**Every detail is well thought-out.** The main cabin window and hatches are flush-mounted in the side walls. Even the filler cap of the integrated motorhome is flush-mounted. The rear lights finish off the vehicle – with a light graphic with the Carthago C-design.



▲ **The Carthago curved roof**

Carthago awakens emotions with its unique and elegant design and the curved roof which is typical of the brand. It also increases the torsion resistance of the body, and there is less susceptibility to side wind. The design and use are perfectly combined!



▲ **Carthago front shroud** combines elegant design and high quality GRP construction. Thanks to the two shell insulation, the Carthago semi-integrated motorhomes guarantee the best living climate, even at low temperatures.



▲ **The Carthago front design** represents uniqueness, connects and is immediately recognisable on the roads. The well shaped radiator grille emphasises the dynamics of the entire motorhome.



**Visit your local Carthago dealer**  
and experience the Carthago  
premium classes!

Presented by:

**Carthago Reisemobilbau GmbH**

**[www.carthago.com](http://www.carthago.com)**

Notes on the details in this catalogue: Changes may have been made to the product after the editorial deadline for this printed document in July 2019. Construction and design changes, differences in shade, as well as changes in the scope of supply on the part of the manufacturer remain subject to change during the delivery period. Differences in colour may be related to printing technicalities. Please note that the vehicles are sometimes pictured with special equipment that has an extra cost. For further technical details please see the price list, also for details about seating whilst driving, etc. This data complies with the German Road Traffic Regulations and Road Traffic Licensing Regulations.